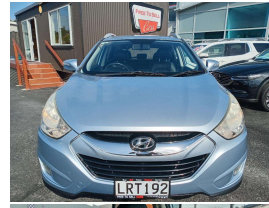


# 2010 Hyundai IX35 2.0R CRDI ELITE A6



## VEHICLE INFORMATION

### Cash Price

Includes GST,  
Registration &  
Licensing

# \$9,995

Finance this vehicle  
from only

# \$50.98

per week\*

Total Amount Payable

\$15,253.44



### Body

5 door, RV/SUV

### Odometer

228,577 km

### Engine

1995 cc, Internal Combustion

### Fuel Type

Diesel

### Transmission

Automatic, 4WD

### Wheels

Factory Alloys

### VIN

KMHJU81VSAU068844

### Reg No.

LRT192

### Ext Colour

Blue

### History

NZ New, 7 owners

### Seats

5 seats, Leather

### Interior

Black, Leather

### Audio

-

### Stock ID

9884



Gain peace of mind  
with Mechanical  
Breakdown Insurance.  
Ask us how.

### Exterior Features

- » Auto Wipers
- » Central Locking
- » Electric Mirrors
- » Electric Windows
- » Heated Rear Window
- » Reverse Camera
- » Tinted Windows
- » Tow Bar

### Interior Features

- » Air Conditioning
- » Airbags
- » Bluetooth - Media & Calling
- » Central Locking
- » Full Band Radio
- » Heated Seats
- » Radio Receiver Capabilty
- » Reverse Camera
- » Steering Wheel Controls

### Mechanical Features

- » ABS Braking
- » CRDi
- » Cruise Control
- » ESC
- » New WOF on Sale
- » NZ New
- » Power Steering
- » Serviced Up to Date
- » Traction Control



Free to Sell, Phone 09 430 3000, Email [info@freetosell.co.nz](mailto:info@freetosell.co.nz)  
40 Porowini Avenue, Whangarei 0110, New Zealand  
[www.freetosell.co.nz](http://www.freetosell.co.nz)

\* Finance calculation based on a 60 month term, 20% deposit and with an example annual fixed interest rate of 14.95%. Actual interest rate may be higher or lower. Includes an establishment fee of \$1,300.00. Full term total amount payable of \$15,253.44. Estimate only, not an offer of finance. Terms, conditions and lending criteria apply.