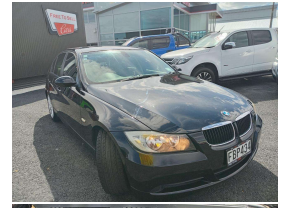
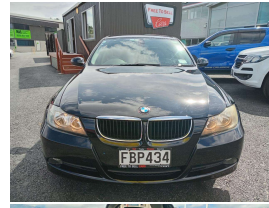


2007 BMW 320I SEDAN 6A 4D 2L



VEHICLE INFORMATION

Cash Price

Includes GST,
Registration &
Licencing

\$7,995

Finance this vehicle
from only

\$42.20

per week*

Total Amount Payable

\$12,572.12



Body

4 door, Sedan

Odometer

112,301 km

Engine

1995 cc, Internal Combustion

Fuel Type

Petrol

Transmission

Automatic, Rear Wheel Drive

Wheels

Factory Alloys

VIN

WBAVA76080NL28866

Reg No.

FBP434

Ext Colour

Black

History

NZ New, 6 owners

Seats

5 seats, Deluxe cloth

Interior

Dark Grey, Deluxe Cloth

Audio

-

Stock ID

9932



Gain peace of mind
with Mechanical
Breakdown Insurance.
Ask us how.

Exterior Features

- » Alloy Wheels
- » Automatic Headlights
- » Car Alarm
- » Central Locking
- » Electric Mirrors
- » Electric Windows
- » Parking Sensors
- » Remote Locking
- » Tinted Windows

Interior Features

- » Air Conditioning
- » Airbags
- » Central Locking
- » Push Button Start

Mechanical Features

- » 16 Valve
- » ABS Braking
- » Aspirated
- » Chain Drive
- » ESC
- » Full Service History
- » New WOF on Sale
- » NZ New
- » Power Steering
- » Serviced Up to Date
- » Traction Control



Free to Sell, Phone 09 430 3000, Email info@freetosell.co.nz
40 Porowini Avenue, Whangarei 0110, New Zealand
www.freetosell.co.nz

* Finance calculation based on a 60 month term, 20% deposit and with an example annual fixed interest rate of 14.95%. Actual interest rate may be higher or lower. Includes an establishment fee of \$1,300.00. Full term total amount payable of \$12,572.12. Estimate only, not an offer of finance. Terms, conditions and lending criteria apply.